

Архангельск (8182)63-90-72  
Астана (7172)727-132  
Астрахань (8512)99-46-04  
Барнаул (3852)73-04-60  
Белгород (4722)40-23-64  
Брянск (4832)59-03-52  
Владивосток (423)249-28-31  
Волгоград (844)278-03-48  
Вологда (8172)26-41-59  
Воронеж (473)204-51-73  
Екатеринбург (343)384-55-89  
Иваново (4932)77-34-06

Ижевск (3412)26-03-58  
Иркутск (395)279-98-46  
Казань (843)206-01-48  
Калининград (4012)72-03-81  
Калуга (4842)92-23-67  
Кемерово (3842)65-04-62  
Киров (8332)68-02-04  
Краснодар (861)203-40-90  
Красноярск (391)204-63-61  
Курск (4712)77-13-04  
Липецк (4742)52-20-81  
Киргизия (996)312-96-26-47

Магнитогорск (3519)55-03-13  
Москва (495)268-04-70  
Мурманск (8152)59-64-93  
Набережные Челны (8552)20-53-41  
Нижний Новгород (831)429-08-12  
Новокузнецк (3843)20-46-81  
Новосибирск (383)227-86-73  
Омск (3812)21-46-40  
Орел (4862)44-53-42  
Оренбург (3532)37-68-04  
Пенза (8412)22-31-16  
Россия (495)268-04-70

Пермь (342)205-81-47  
Ростов-на-Дону (863)308-18-15  
Рязань (4912)46-61-64  
Самара (846)206-03-16  
Санкт-Петербург (812)309-46-40  
Саратов (845)249-38-78  
Севастополь (8692)22-31-93  
Симферополь (3652)67-13-56  
Смоленск (4812)29-41-54  
Сочи (862)225-72-31  
Ставрополь (8652)20-65-13  
Казахстан (772)734-952-31

Сургут (3462)77-98-35  
Тверь (4822)63-31-35  
Томск (3822)98-41-53  
Тула (4872)74-02-29  
Тюмень (3452)66-21-18  
Ульяновск (8422)24-23-59  
Уфа (347)229-48-12  
Хабаровск (4212)92-98-04  
Челябинск (351)202-03-61  
Череповец (8202)49-02-64  
Ярославль (4852)69-52-93

[www.sft.nt-rt.ru](http://www.sft.nt-rt.ru) | | [sfq@nt-rt.ru](mailto:sfq@nt-rt.ru)

# Технические характеристики на первичные литиевые аккумуляторные системы серии ВА

# Primary lithium battery system BA 5380

## 6 V Primary lithium manganese dioxide (Li-MnO<sub>2</sub>) battery

The battery consists of 2 LM 33550 cells connected in series.

### Key Features

- A non-replaceable fuse is incorporated on the battery negative
- A normally closed thermal fuse (TCO) is incorporated in the battery. It is non-replaceable and non-resettable
- A blocking diode is incorporated to prevent charging
- A non-replaceable fuse is connected between the two cells for added safety
- A complete discharge device (CDD) with LED activation indicator is built into the battery. The CDD consists of a manually activated switch to connect a resistor for discharging the battery to 0 V
- Made in the U.S.A.

### Typical applications

- AN/PSN-11 GPS
- AN/PSN-10 (V) GPS
- Chemical Agent Monitor

### Electrical characteristics

Typical OCV	6.0 V
Nominal voltage (at 500 mA)	5.4 V
Cut-off	4.0 V
Typical capacity +21°C / +70°F (at 250 mA discharge current)	13 Ah
Operating temperature	-40°C to +71°C / -40°F to +160°F
Storage (Recommended max) (Possible)	+35°C / +95°F -40°C to +71°C / -40°F to +160°F

### Physical characteristics

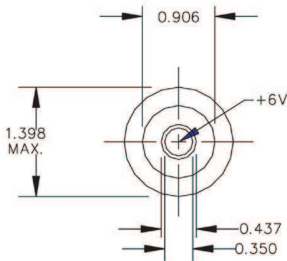
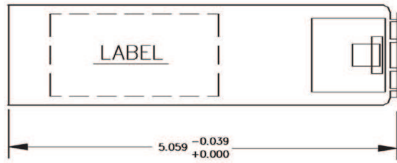
Max weight	327 g / 11.5 oz
Weight of Li metal content	7.4 g / 0.26 oz
Max OD	35.51 mm / 1.398 in
Max height	128.5 mm / 5.059 in
Battery case	Plastic

### References

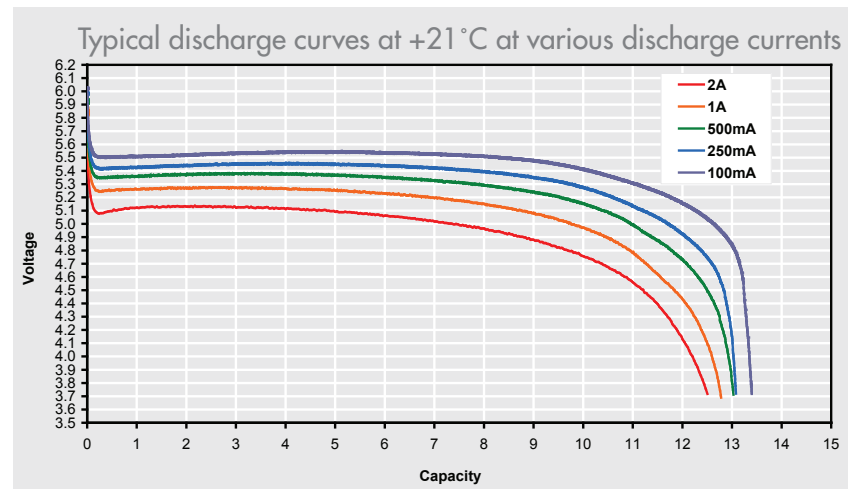
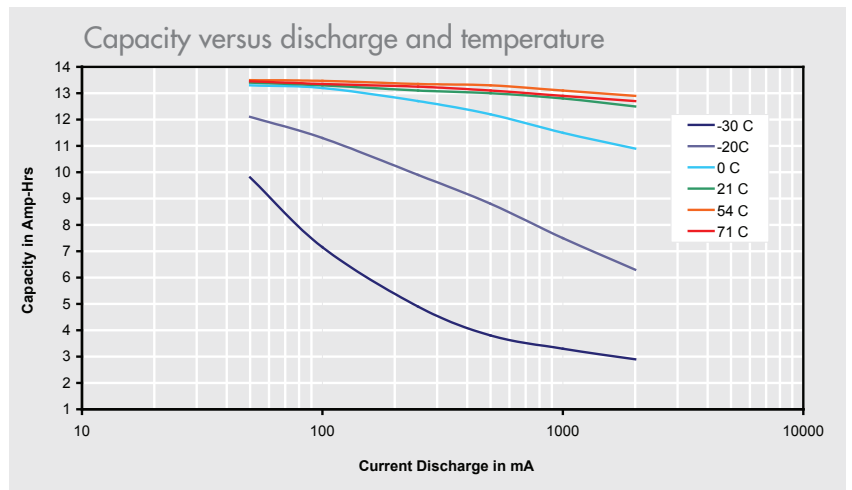
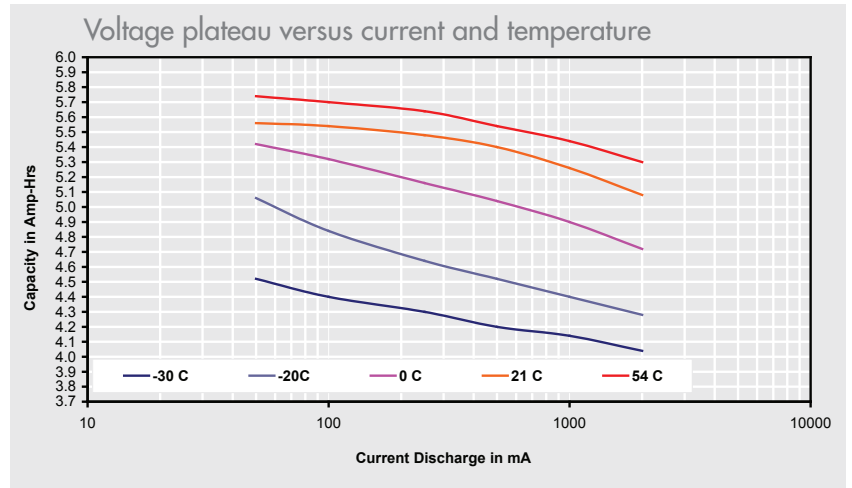
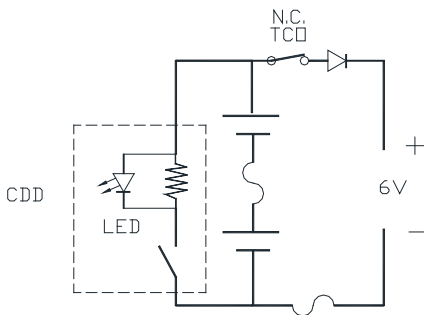
Reference specification	
Nato Stock Number	6135-01-517-4954

# BA 5380

BA 5380 dimensions  
 \*All measurements in inches



Electrical schematic



# Li-SO<sub>2</sub> primary battery system

## BA 5847 B/U

Assembled from 2 LO 26 SX cells connected in series.

### Key features

- A non-replaceable fuse is incorporated in the negative leg.
- A normally closed thermal fuse (TCO) is incorporated in the battery. It is non-replaceable and non-resettable.
- A diode is incorporated to prevent charging or flow of current into the battery.
- A device consisting of a manually activated switch and resistor designed to discharge the battery to 0 V is built into the battery.
- Made in the USA

### Typical applications

- AN/PRM-34 Radio Tests
- AN/PRS-7 Mine Detection
- AN/TS-54 Night Sight

### Electrical Characteristics

Typical OCV (V)	6.0
Nominal voltage (at 500mA) (V)	5.3
Cut-off (V)	4.0
Typical Capacity (Ah) +21 °C / + 70 °F (at 250 mA discharge current)	7.5
Operating temperature	-40° C to 71° C -40° F to 160° F
Storage	Recommended max Possible
	+35°C/ +95°F -40° C to 71° C / -40° F to 160° F

### Physical Characteristics

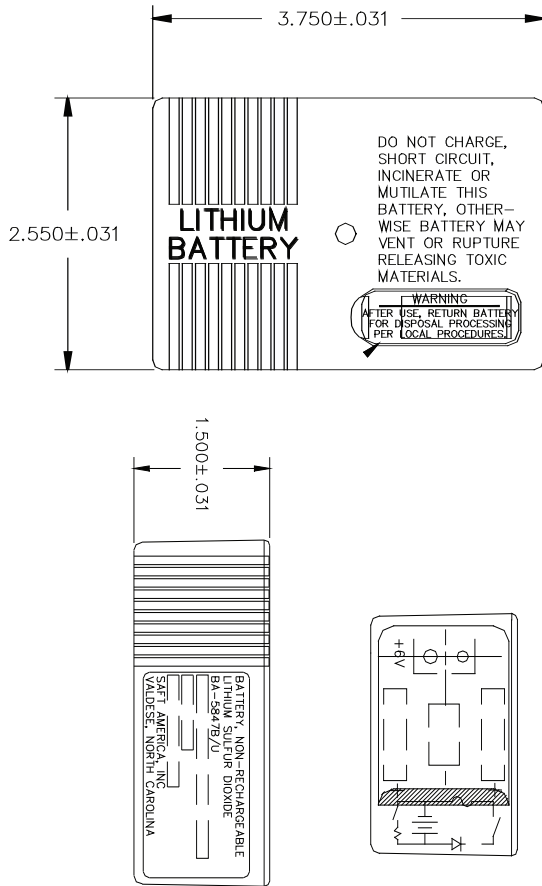
Typical Weight (g/oz)	240 / 8.47
Weight of Li metal content (g/oz)	4.8 / 0.16
Max. Width (mm/ in)	95/ 3.78
Max. Height (mm/ in)	65 / 2.58
Max. Depth (mm/ in)	38 / 1.53
Battery Case	Plastic

### References

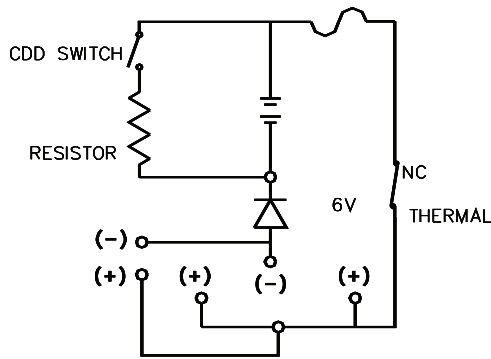
Mating Connector	Keystone Electronics No. 212
Reference specifications	MIL PRF 49471B (CR) or Standard Specifications
NSN Reference	6135-01-090-5364

## BA 5847 B/U dimensions

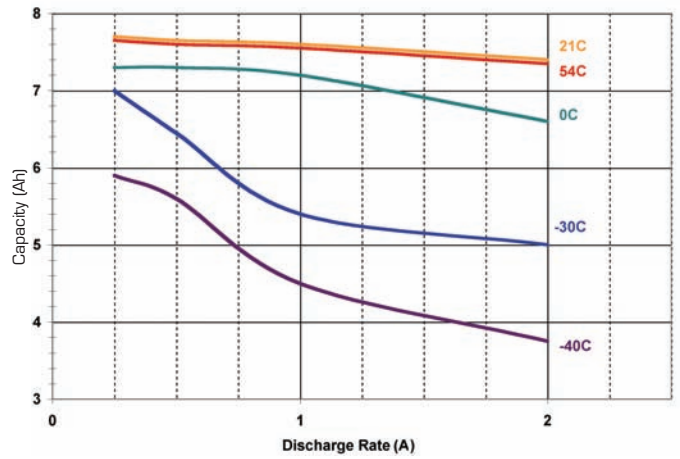
\*All measurements in inches



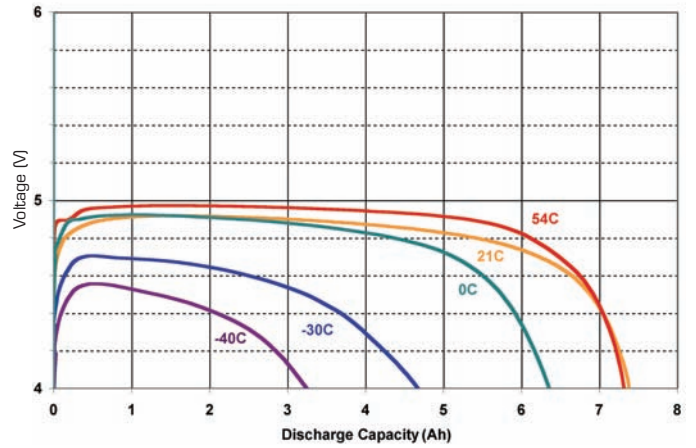
## Electrical schematic



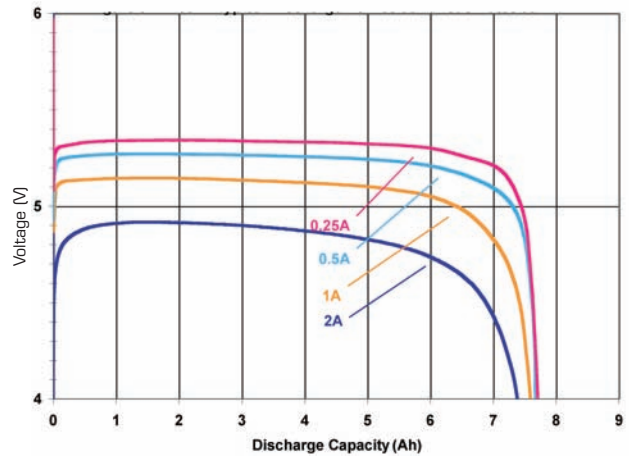
## Capacity vs rate at various temperatures



## 2 A discharge typical curves at various temperatures



## Typical discharge curves at various rates at +21°C/+70°F



# Li-SO<sub>2</sub> primary battery system

## BA 5800 A/U

Assembled from 2 LO 26 SX cells connected in series.

### Key features

- A non-replaceable fuse is incorporated in the negative leg.
- A normally closed thermal fuse (TCO) is incorporated in the battery. It is non-replaceable and non-resettable.
- A diode is incorporated to prevent charging or flow of current into the battery.
- A device consisting of a manually activated switch and resistor designed to discharge the battery to 0 V is built into the battery.
- Made in the USA

### Typical applications

- AN/PSN-11 GPS
- AN/PSN-10 (V) GPS
- Chemical Agent Monitor

### Electrical Characteristics

Typical OCV (V)	6.0
Nominal voltage (at 500mA) (V)	5.3
Cut-off (V)	4.0
Typical Capacity (Ah) +21 °C / + 70 °F (at 250 mA discharge current)	7.5
Operating temperature	-40° C to 71° C -40° F to 160° F
Storage	Recommended max Possible
	+35°C/ +95°F -40° C to 71° C / -40° F to 160° F

### Physical Characteristics

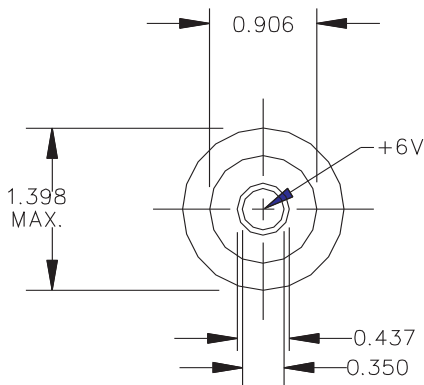
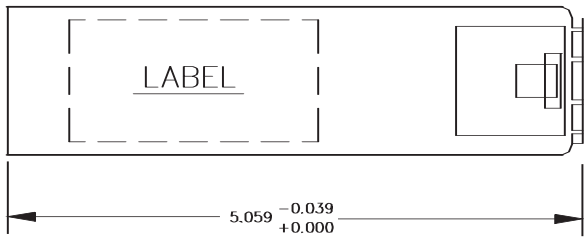
Typical Weight (g/oz)	220 / 7.76
Weight of Li metal content (g/oz)	4.8 / 0.17
Max. OD (mm/ in)	35.51/ 1.398
Max. Height (mm/ in)	128.5 / 5.059
Battery Case	Plastic

### References

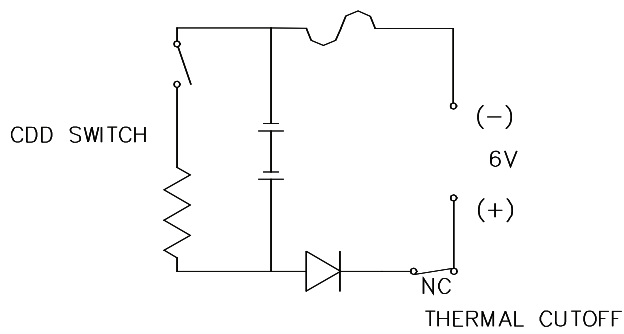
Reference specifications	MIL PRF 49471B (CR) or Standard Specifications
NSN Reference	6135-01-440-7774

### BA 5800 A/U dimensions

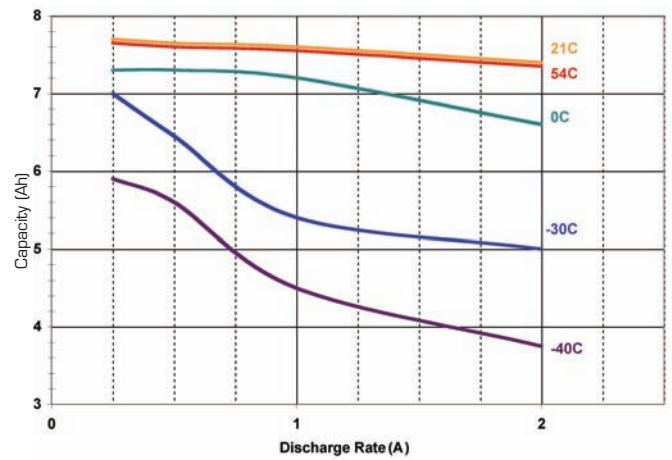
\*All measurements in inches



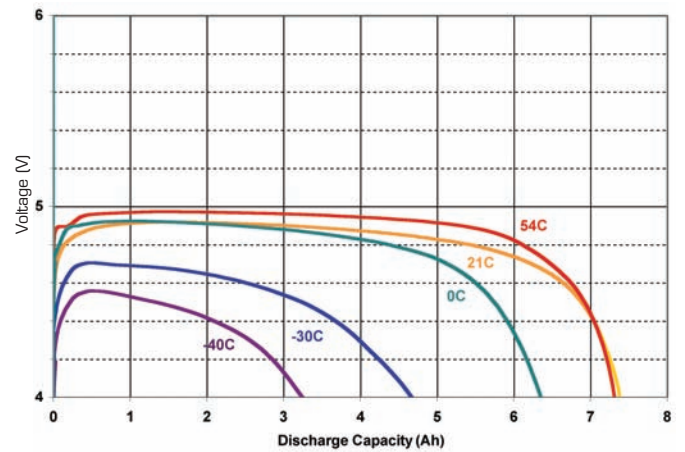
### Electrical schematic



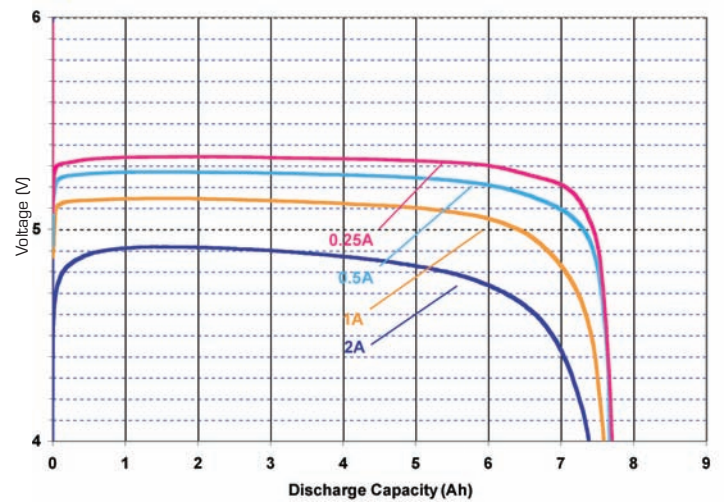
### Capacity vs rate at various temperatures



### 2 A discharge typical curves at various temperatures



### Typical discharge curves at various rates at +21°C/+70°F



# Li-SO<sub>2</sub> primary battery system

## BA 5600 A/U

Assembled from 3 LO 26 SX cells connected in series.

### Key features

- A non-replaceable fuse is incorporated in the negative leg.
- A normally closed thermal fuse (TCO) is incorporated in the battery. It is non-replaceable and non-resettable.
- A diode is incorporated to prevent charging or flow of current into the battery.
- A device consisting of a manually activated switch and resistor designed to discharge the battery to 0 V is built into the battery.
- Made in the USA

### Typical applications

- AN/PSC-2 Communications Terminal

### Electrical Characteristics

Typical OCV (V)	9.0
Nominal voltage (at 500mA) (V)	8.1
Cut-off (V)	4.0
Typical Capacity +21 °C / + 70 °F (at 250 mA discharge current)	7.5
Operating temperature	-40° C to 71° C -40° F to 160° F
Storage	Recommended max Possible
	+35°C/ +95°F -40° C to 71° C / -40° F to 160° F

### Physical Characteristics

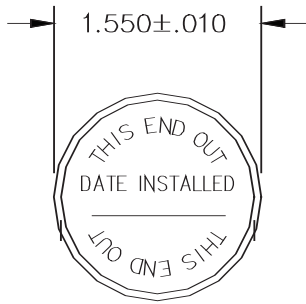
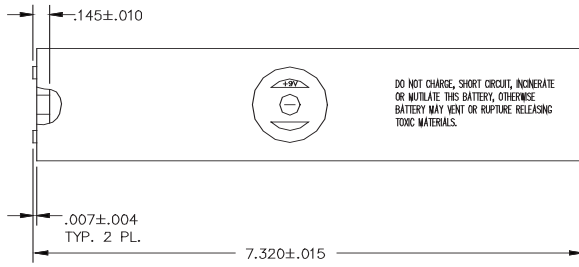
Typical Weight (g/oz)	360 / 12.7
Weight of Li metal content (g/oz)	7.2 / 0.25
Max. Width (mm/ in)	39 / 1.56
Max. Height (mm/ in)	186 / 7.34
Max. Depth (mm/ in)	
Battery Case	Plastic

### References

Reference specifications	MIL PRF 49471B (OR) or Standard Specifications
NSN Reference	6135-01-168-2944

### BA 5600 A/U dimensions

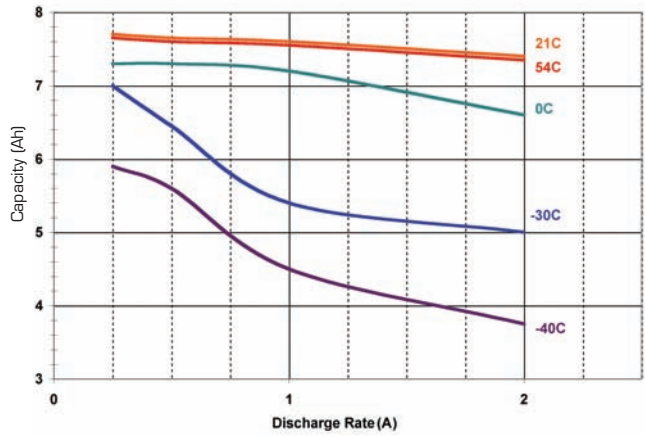
\*All measurements in inches



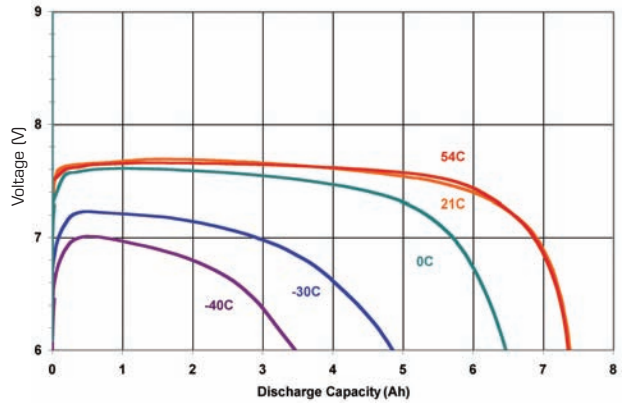
### Electrical schematic



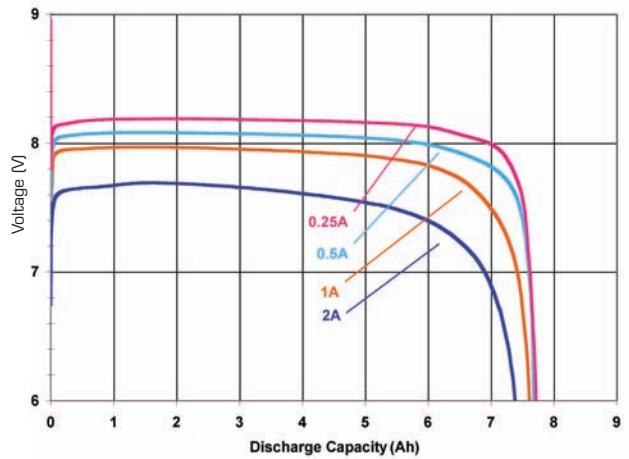
### Capacity vs rate at various temperatures



### 2 A discharge typical curves at various temperatures



### Typical discharge curves at various rates at +21°C/+70°F



# Li-SO<sub>2</sub> primary battery system

## BA 5599 A/U

Assembled from 3 LO 26 SX cells connected in series.

### Key features

- A non-replaceable fuse is incorporated in the negative leg.
- A normally closed thermal fuse (TCO) is incorporated in the battery. It is non-replaceable and non-resettable.
- A diode is incorporated to prevent charging or flow of current into the battery.
- A device consisting of a manually activated switch and resistor designed to discharge the battery to 0 V is built into the battery.
- Made in the USA

### Typical applications

- AN/PAS-9 Mine Detector
- AN/PAS-6 Metascope

### Electrical Characteristics

Typical OCV (V)	9.0
Nominal voltage (at 500mA) (V)	8.1
Cut-off (V)	6.0
Typical Capacity (Ah) +21 °C / + 70 °F (at 250 mA discharge current)	7.5
Operating temperature	-40° C to 71° C -40° F to 160° F
Storage	Recommended max Possible
	+35°C/ +95°F -40° C to 71° C / -40° F to 160° F

### Physical Characteristics

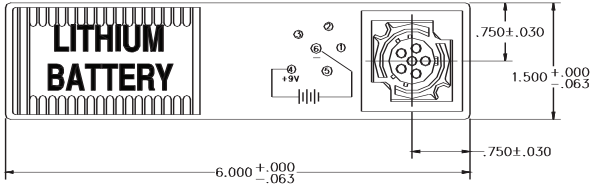
Typical Weight (g/oz)	450 / 15.9
Weight of Li metal content (g/oz)	7.2 / 0.25
Max. Width (mm/ in)	152 / 6.0
Max. Height (mm/ in)	64 / 2.5
Max. Depth (mm/ in)	38 / 1.5
Battery Case	Plastic

### References

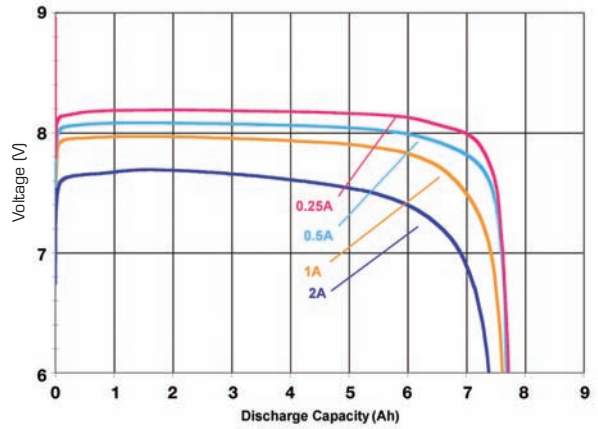
Mating Connector	ITT Cannon CA110821-6
Reference specifications	MIL PRF 49471B (CR) or Standard Specifications
NSN Reference	6135-01-069-8575

**BA 5599 A/U dimensions**

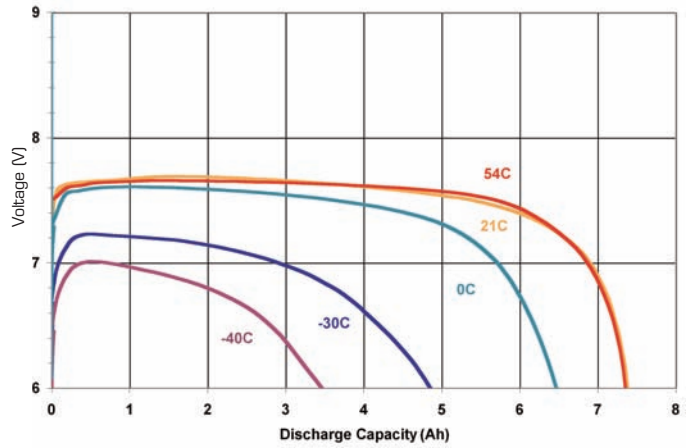
\*All measurements in inches



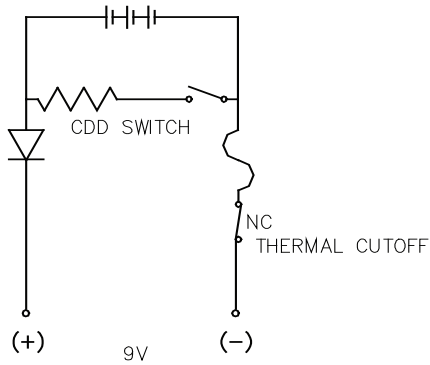
**Capacity vs rate at various temperatures**



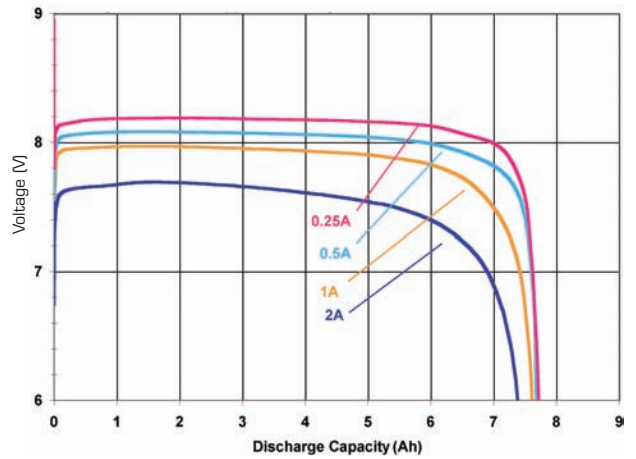
**2 A discharge typical curves at various temperatures**



**Electrical schematic**



**Typical discharge curves at various rates at +21°C/+70°F**



# Primary lithium battery system

## BA 5598/U and BA 5598 A/U

15 V/3 V Primary lithium sulfur dioxide (Li-SO<sub>2</sub>) battery

The battery consists of 5 L025SX cells connected in series with a tap at one cell providing an overall section of 15 V with a 3 V tap open circuit voltage.

### Key Features

- A non-replaceable 3 A fuse is incorporated in both the ground and 3 V outputs
- A normally closed high temperature one-shot thermal fuse is incorporated on the ground output
- A diode is incorporated on into the overall 15 V positive output
- A constant discharge device (CDD) consisting of a manually activated pull tab and resistor is incorporated to permit discharge of the battery to 0 V for disposal
- Alternative configurations such as no CDD are available. Consult factory.

### Typical applications

- AN/PRC-25
- AN/PRC-77
- AN/PRC-74
- AN/PRD-11
- TSEC/KY-38
- TSEC/KY-65
- AN/GRQ-26
- AN/RRD-10
- AN/GRA-114
- AN/MSC-25

Electrical characteristics	A1+(3 V)	A2+(15 V)
Nominal OCV	3 V	15 V
Maximum OCV	3.05 V	15.25 V
Operating voltage	2.8 V	14.0 V
Cut-off voltage	2.0 V	10.0 V

Typical capacity at 500 mA to 10V cut-off

at 70°F (21°C)

8.2 Ah

at -4°F (-20°C)

7.0 Ah

Operating temperature\*

-40°C to +71°C / -40°F to +160°F

Storage (Recommended max)

+35°C / +95°F

(Possilbe)

-40°C to +71°C / -40°F to +160°F

Physical characteristics	Metric	Imperial
Typical weight	680 g	24 oz
Weight of Li metal content	12.5 g	
Width	120.7 mm	4.750 in
Height	92.1 mm	3.625 in
Depth	54 mm	2.125 in
Battery case	Plastic	

### References

figuration

Nato Stock Number

BA 5598 A/U (unit package = 4 batteries)

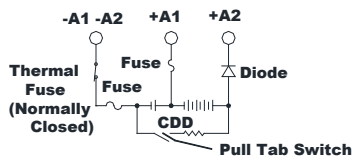
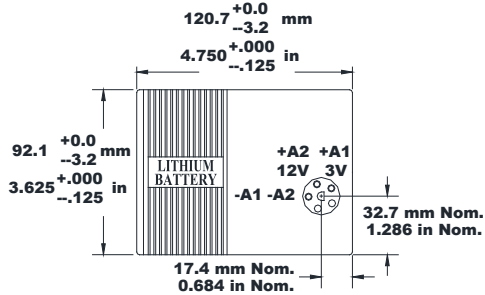
6135-01-447-5081

BA 5598/U (unit package = 1 battery)

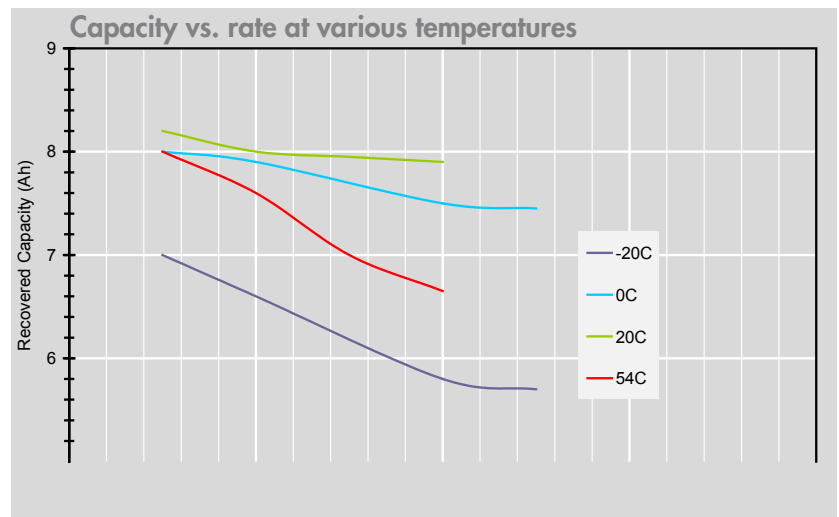
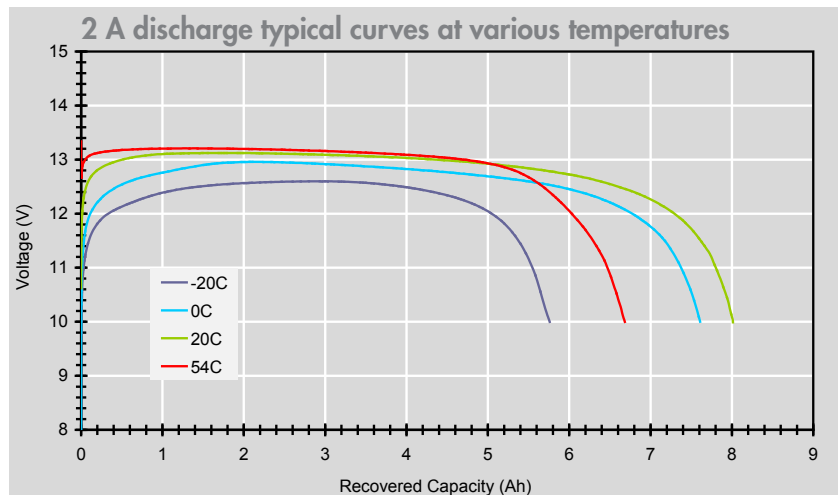
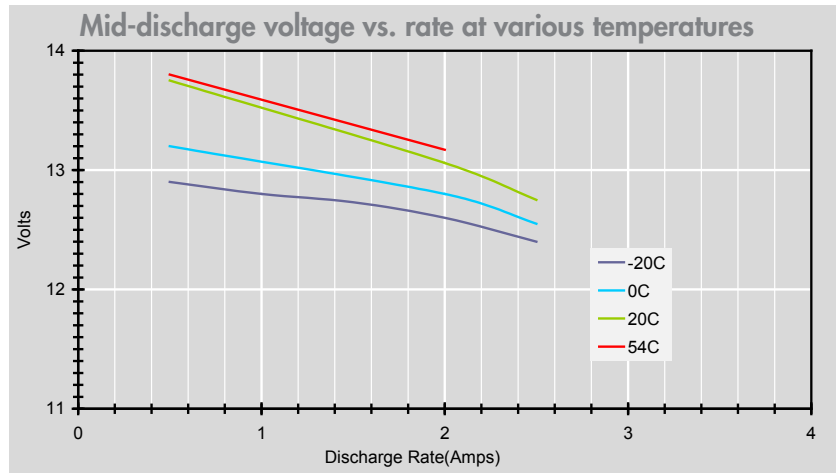
6135-01-034-2239

\*Discharge at temperature  $\geq 54^{\circ}\text{C}$  (130°F) may be limited due to self-heating and activation of the thermal fuse.

# BA 5598/U and BA 5598 A/U



**Electrical Schematic**



# Li-SO<sub>2</sub> primary battery system

## BA 5590 High capacity

20% more capacity than  
regular BA 5590 B/U battery

10 LO 26 SXC cells connected in  
2 groups of 5 cells in series  
providing 2 nominal 12 V sections  
at connector. These sections can  
be connected in series (for 24 V)  
in parallel (for 12 V) or used as  
two separate 12 V units.

### Key features

- A non-replaceable fuse is incorporated in the negative leg of each series group of cells.
- A normally closed high temperature switch or thermal fuse is incorporated into each series group of cells to protect against overheating.
- A diode is incorporated into the positive leg of each series group of cells to prevent charging or flow of current into the battery.
- A device consisting of a manually activated pull tab and resistors designed to discharge the battery to 0 V is built into the battery.

### Typical applications

- AN/PRC-104 Radio
- AN/PRC-113 Radio
- AN/PRC-117 Radio
- AN/PRC-119 Singcars Radio
- KY-57, KY-65 Encryption Set
- REMBASS Remotely Monitored Battlefield Surveillance System
- PLRS Position Locator and Reporting System
- RT-991 Buoy Radio
- RT-1175 Buoy Radio
- AN/TAS-4A TOW Night Sight

### Electrical characteristics

Typical OCV (V)	15.0 or 30.0
Nominal voltage (at 500 mA) (V)	13.5 or 27.0
Cut-off (V)	10.0 or 20.0
Typical capacity +21°C/+70°F (at 250 mA discharge current)	18.2 Ah at 12 V 9.1 Ah at 24 V
Operating temperature	-40°C to +71°C -40°F to +160°F
Storage	Recommended max Possible
	+35°C / +95°F -40°C to +71°C / -40°F to +160°F

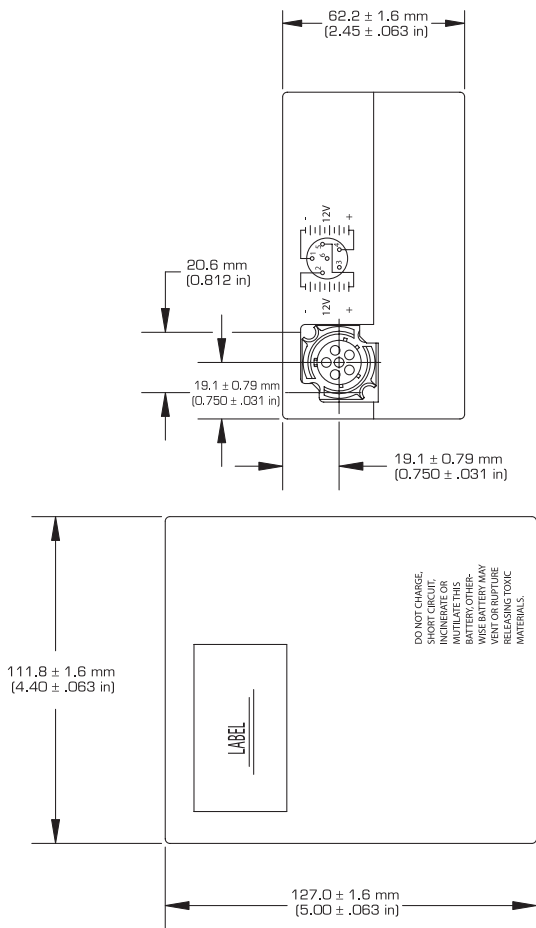
### Physical characteristics

Typical Weight (g/oz)	1000 / 35.3
Weight of Li metal content (g/oz)	27 / 0.95
Width (mm/in)	62.2 / 2.45
Height (mm/in)	111.8 / 4.40
Depth (mm/in)	127.0 / 5.00
Battery Case	Plastic

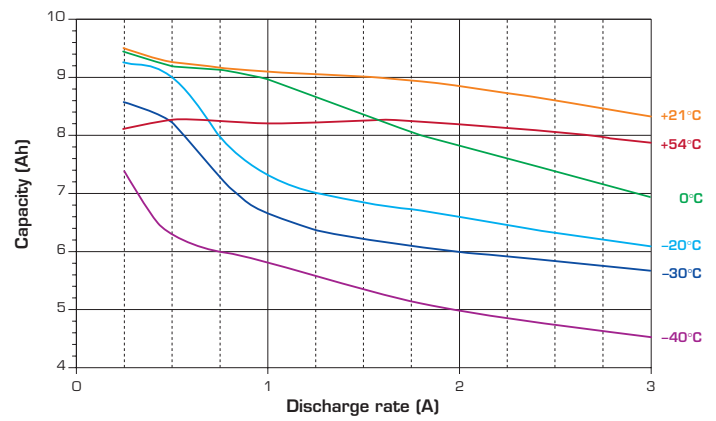
### References

Mating connector	ITT Cannon CA 110821- 6
Reference specifications	MIL PRF 49471B or Standard Specification

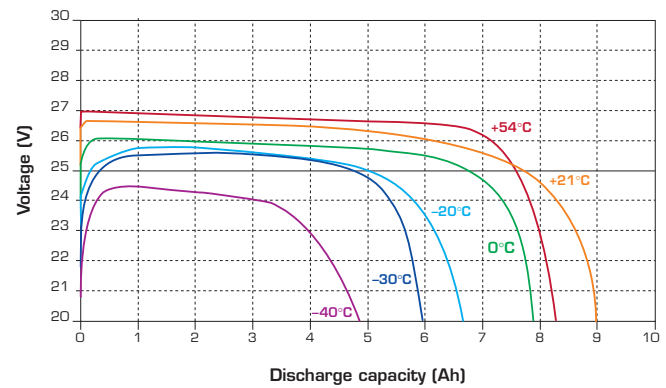
## BA 5590 HC dimensions



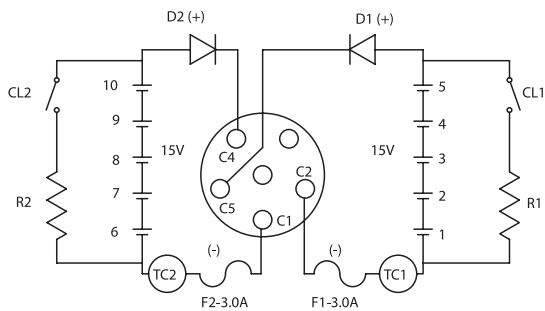
## Capacity vs rate at various temperatures



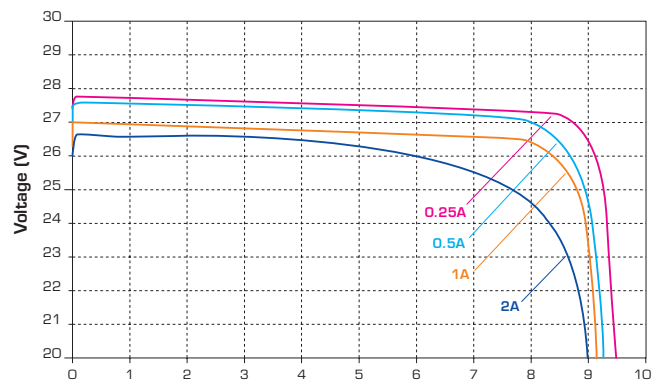
## 2 A discharge typical curves at various temperatures (24 V mode)



## Electrical schematic



## Typical discharge curves at various rates at +21°C/+70°F



# Primary lithium battery system BA 5590 B/U

## 12 V/24 V Primary lithium sulfur dioxide (LiSO<sub>2</sub>) battery

The battery consists of 10 LO 26 SX cells connected in 2 groups of 5 cells in series providing 2 nominal 12 V sections at connector. These sections can be connected in series (for 24 V) in parallel (for 12 V), or used as two separate 12 V units.

### Key Features

- A non-replaceable fuse is incorporated in the negative leg of each series group of cells
- A normally closed high temperature switch or thermal fuse is incorporated into each series group of cells to protect against overheating
- A diode is incorporated into the positive leg of each series group of cells to prevent charging or flow of current into the battery
- For safe end of life recycling, there is an identified pull-tab to fully discharge the battery

### Typical applications

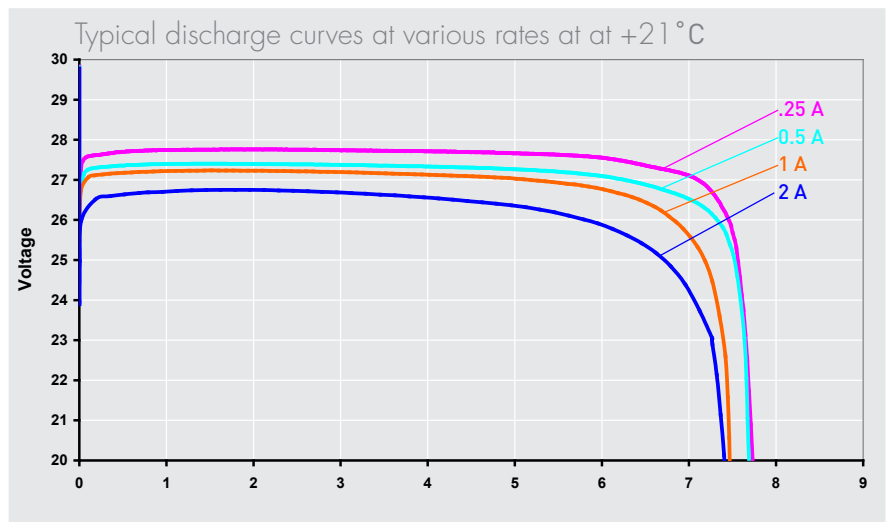
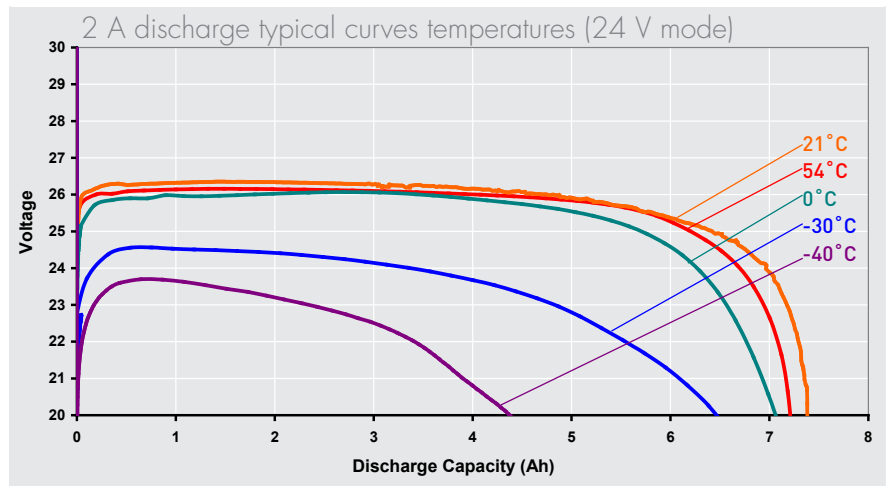
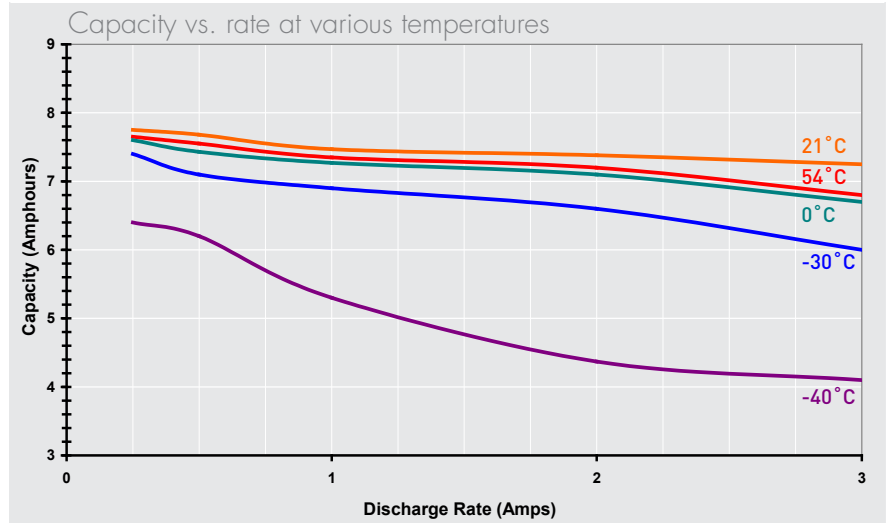
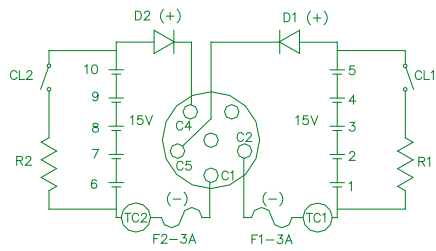
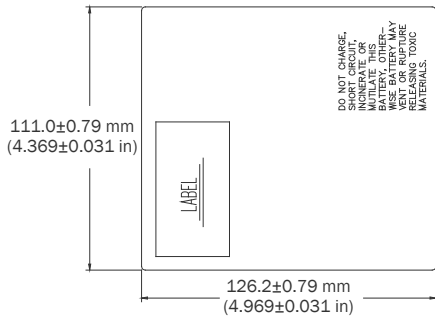
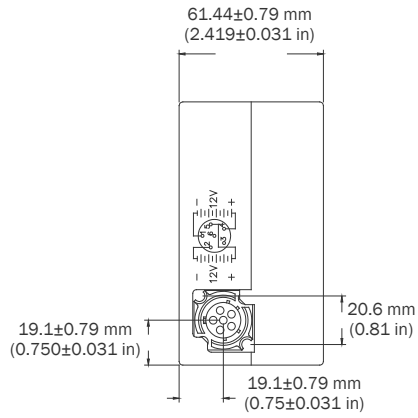
- AN/PRC-104 Radio
- AN/PRC-113 Radio
- AN/PRC-117 Radio
- AN/PRC-119 Sincgards Radio
- AN/PRC 150
- KY-57, KY-65 Encryption set
- REMBASS Remotely monitored battlefield surveillance system
- PLRS position locator and reporting system
- RT-991 buoy radio
- RT-1175 buoy radio
- AN/TAS-4A TOW night sight

Electrical characteristics	12 V mode	24 V mode
Maximum OCV	15 V	30 V
Nominal voltage (at 500 mA)	13.5 V	27 V
Cut-off	10 V	20 V
Typical capacity +21 °C / +70 °F (at 2 A discharge current)	15 Ah at 12 V	7.5 Ah at 24 V
Operating temperature	-40 °C to +71 °C / -40 °F to +160 °F	
Storage (Recommended max) (Possilbe)	+35 °C / +95 °F -40 °C to +71 °C / -40 °F to +160 °F	

Physical characteristics	Metric	Imperial
Typical weight	1,000 g	35.3 oz
Weight of Li metal content	24.0 g	0.85 oz
Width	62.2 mm	2.45 in
Height	111.8 mm	4.40 in
Depth	127.0 mm	5.00 in
Battery case	Plastic	

References	
Mating connector	IT Cannon CA 110821-6
Reference specification	
Nato Stock Number (BA 5590/U)	6135-01-438-9450 6135-01-036-3495
CAGE code	7X634

# BA 5590 B/U



# Li-SO<sub>2</sub> primary battery system

## BA 5590 A/U

With state of charge indicator (SOCi)

10 LO 26 SX cells connected in 2 groups of 5 cells in series providing 2 nominal 12 V sections at connector. These sections can be connected in series (for 24 V) in parallel (for 12 V) or used as two separate 12 V units.

### Key features

- A non-replaceable fuse is incorporated in the negative leg of each series group of cells.
- A normally closed high temperature switch or thermal fuse is incorporated into each series group of cells to protect against overheating.
- A diode is incorporated into each series group of cells to prevent charging or flow of current into the battery.
- A device consisting of a manually activated pull tab and resistors designed to discharge the battery to 0 V is built into the battery.
- A microprocessor based state of charge indicator shows the remaining capacity. The SOCi includes a LED display and push button activation. The SOCi is discharge rate and temperature compensated.

### Typical applications

- AN/PRC-104 Radio
- AN/PRC-113 Radio
- AN/PRC-117 Radio
- AN/PRC-119 Singcars Radio
- KY-57, KY-65 Encryption Set
- REMBASS Remotely Monitored Battlefield Surveillance System
- PLRS Position Locator and Reporting System
- RT-991 Buoy Radio
- RT-1175 Buoy Radio
- AN/TAS-4A TOW Night Sight

### Electrical characteristics

Typical OCV (V)	15.0 or 30.0
Nominal voltage (at 500 mA) (V)	13.5 or 27.0
Cut-off (V)	10.0 or 20.0
Typical capacity +21°C/+70°F (at 250 mA discharge current)	15 Ah at 12 V 7.5 Ah at 24 V
Operating temperature	-40°C to +71°C -40°F to +160°F
Storage	Recommended max Possible
	+35°C / +95°F -40°C to +71°C / -40°F to +160°F

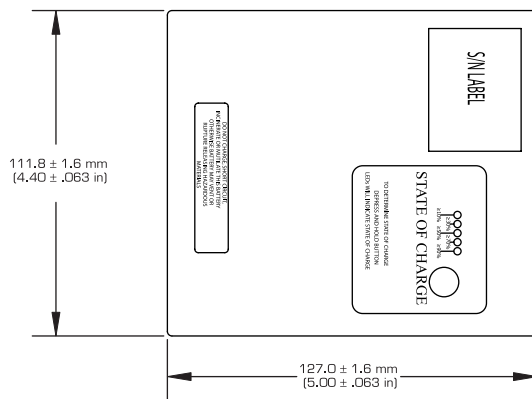
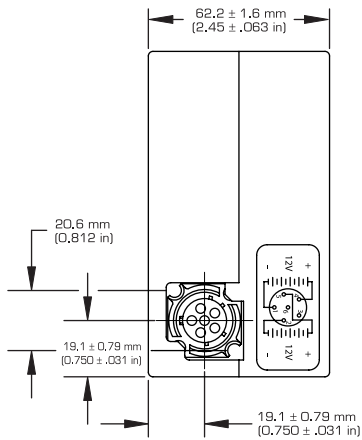
### Physical characteristics

Typical Weight (g/oz)	1000 / 35.3
Weight of Li metal content (g/oz)	24 / 0.85
Width (mm/in)	62.2 / 2.45
Height (mm/in)	111.8 / 4.40
Depth (mm/in)	127.0 / 5.00
Battery Case	Plastic

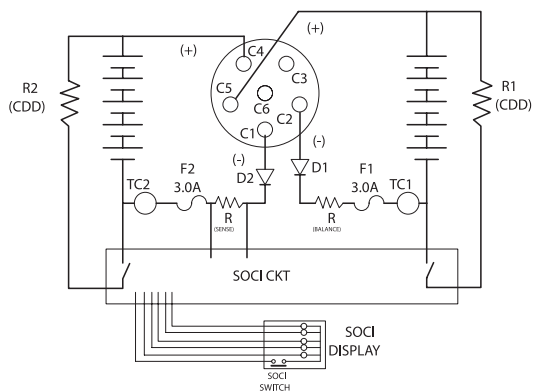
### References

Mating connector	ITT Cannon CA 110821- 6
Reference specifications	MIL PRF 49471B or Standard Specification
NSN reference	6135-01-523-3037

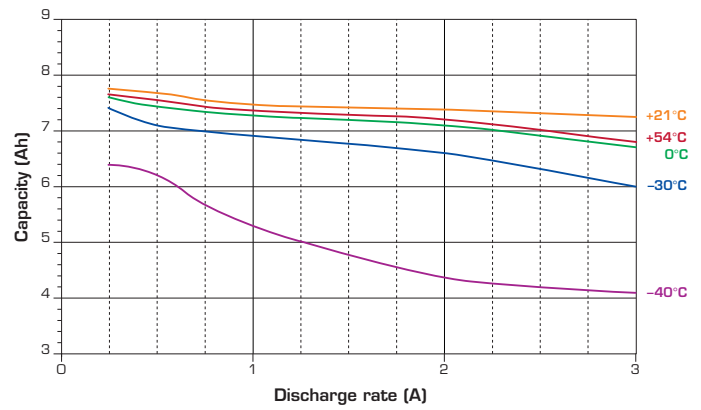
## BA 5590 A/U dimensions



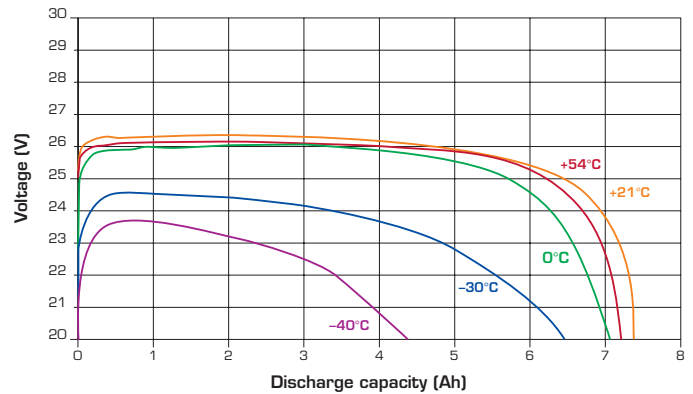
## Electrical schematic



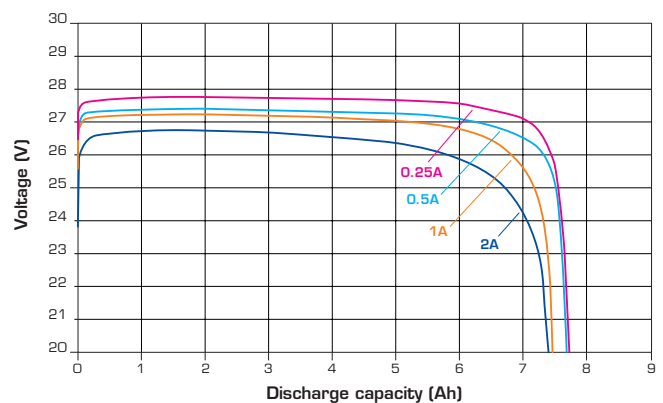
## Capacity vs rate at various temperatures



## 2 A discharge typical curves at various temperatures (24 V mode)



## Typical discharge curves at various rates at +21°C/+70°F



# Primary lithium battery

## BA 5567

3 V Primary lithium sulfur dioxide (Li-SO<sub>2</sub>)  
High drain capability  
1/3 C-size spiral cell

### Benefits

- High and stable discharge voltage
- High pulse capability
- Performance not affected by cell orientation
- Long storage possible before use
- Ability to withstand extreme temperature

### Key Features

- Low self-discharge rate (*less than 3% after one year of storage at + 20°C*)
- Hermetic glass-to-metal sealing
- Flat pressure contact terminals
- Built-in safety vent (*at the negative end of the cell*)
- UL Component Recognition (*File number MH 15076*)
- Meets shock, vibration, and other environmental requirements of military specifications
- Made in the USA

### Typical applications

- Night vision

Scale = 1.47 of actual size

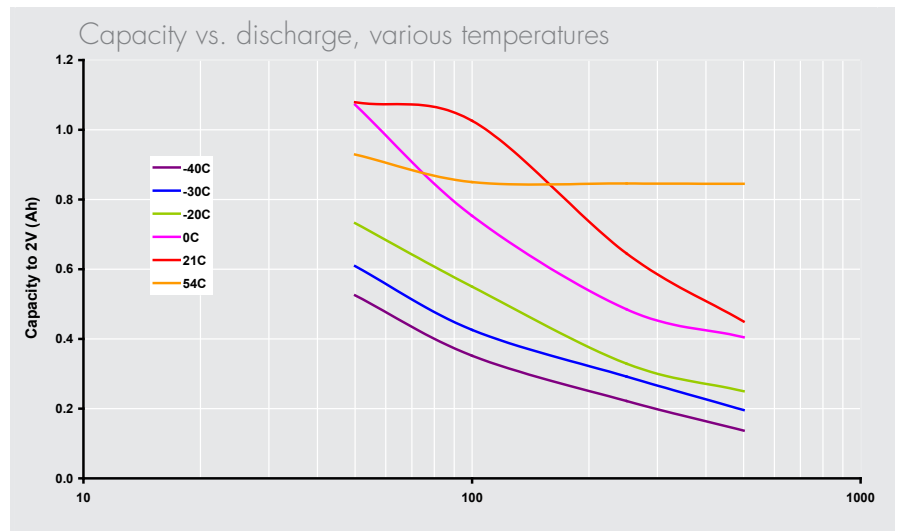
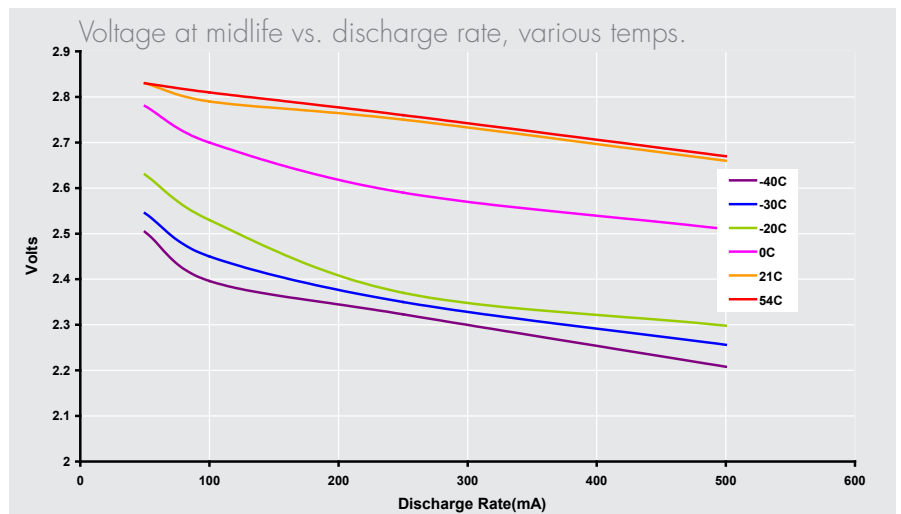
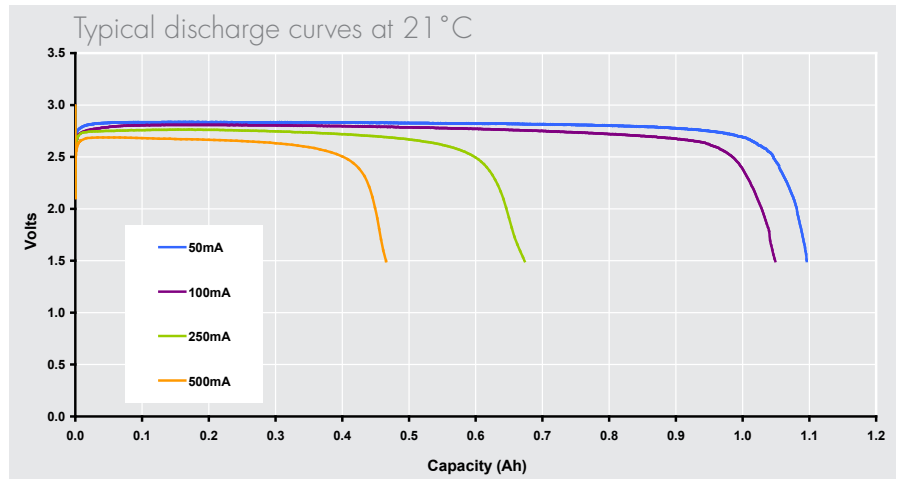
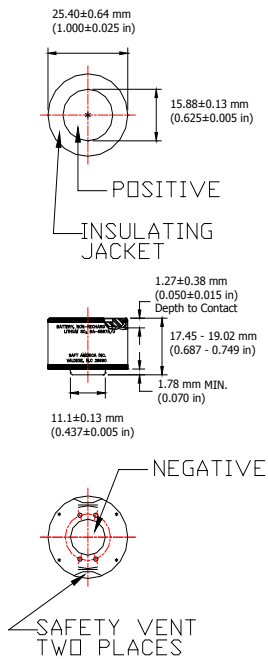
Cell size reference	1/3 um2	1/3 R14	1/3 C
<b>Electrical characteristics</b>			
Nominal capacity			1.0 Ah
Open circuit voltage			3 V
Nominal voltage (at 28 mA)			2.8 V
Rated capacity (at 28 mA discharge)			
70°F (21°C)			1.0 Ah
- 20°F (- 29°C)			0.6 Ah
Maximum recommended continuous current			0.5 A
Storage (% of rated capacity)			
1 year		70°F (21°C): >95%	
1 month		160°F (71°C): >90%	
Operating temperature range			- 40°F (- 40°C) to 160°F (71°C)
<b>Physical characteristics</b>			
Diameter (maximum)			26.04 mm (1.025 in)
Height			19.02 mm (0.749 in)
Weight (maximum)			0.7 oz (20 gr)
Weight of Li			0.35 gr
Volume			0.54 in <sup>3</sup> (8.9 cc)
<b>References</b>			
NSN Number			6135014475082

# BA 5567

## Handling precautions

- Cell is pressurized at ambient temperature
- Do not puncture, open, or mutilate
- Do not obstruct safety vent mechanism
- Do not short circuit or charge
- Do not expose to fire or temperatures above 160°F (71°C)

BA5567 Dimensions



# Primary lithium battery system BA 5390/U

## 12 V Primary lithium manganese dioxide (Li-MnO<sub>2</sub>) battery

The battery consists of 10 LM 33550 cells connected in 2 groups of 5 cells in series providing 2 nominal 12 V sections at connector. These sections can be connected in series (for 24 V) in parallel (for 12 V), or used as two separate 12 V units.

### Key Features

- A non-replaceable fuse is incorporated in the negative leg of each series group of cells
- A normally closed high temperature switch or thermal fuse is incorporated into each series leg of cells
- Internal series string short circuit protection incorporated into each leg of the battery
- A diode is incorporated into the positive leg of each series group of cells to prevent charging or flow of current into the battery
- A device consisting of a manually activated switch and resistors designed to discharge the battery to 0 V is built into the battery (optional)
- Optional design with push button state of charge indicator is available

### Typical applications

- AN/PRC-104 Radio
- AN/PRC-113 Radio
- AN/PRC-117 Radio
- AN/PRC-119 Sincgars Radio
- KY-57, KY-65 Encryption set
- REMBASS Remotely monitored battlefield surveillance system
- PLRS position locator and reporting system
- RT-991 buoy radio
- RT-1175 buoy radio
- AN/TAS-4A TOW night sight

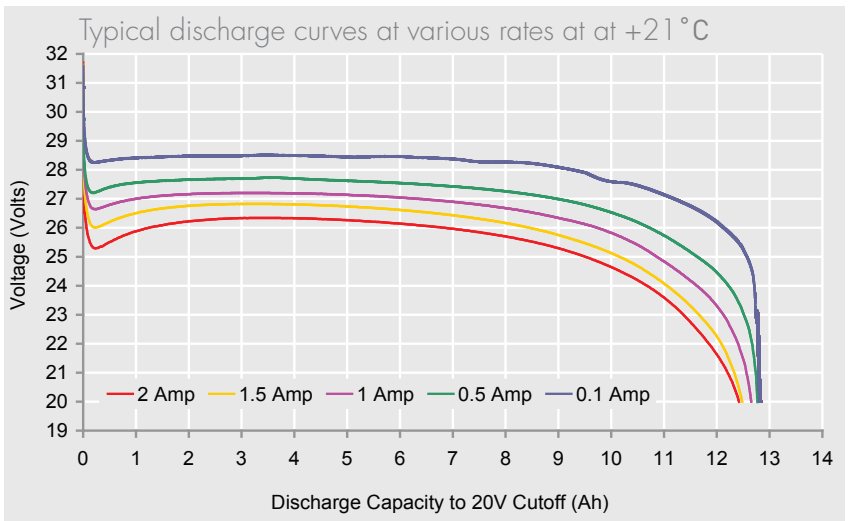
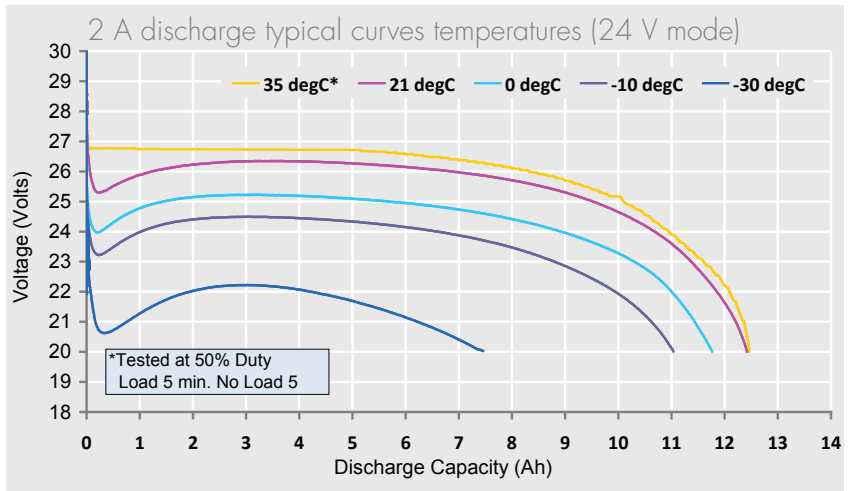
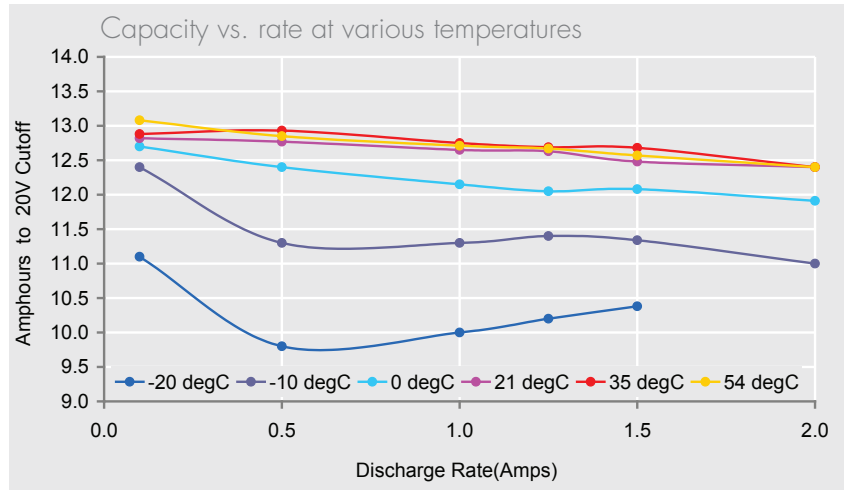
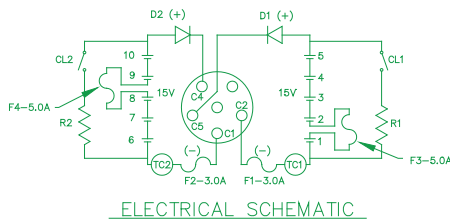
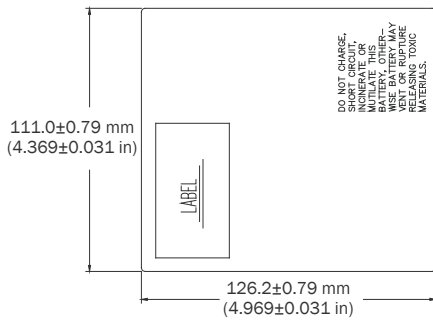
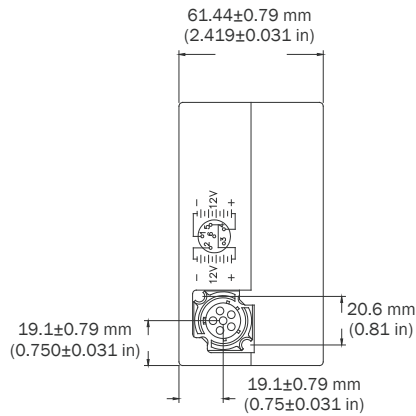
Electrical characteristics	12 V mode	24 V mode
Maximum OCV	16.5 V	33 V
Nominal voltage (at 500 mA)	13.5 V	27 V
Cut-off	10 V	20 V
Typical capacity +21 °C / +70 °F (at 2 A discharge current)	24.8 Ah at 12 V	12.4 Ah at 24 V
Operating temperature	-40 °C to +71 °C / -40 °F to +160 °F	
Storage (Recommended max) (Possible)	+35 °C / +95 °F -40 °C to +71 °C / -40 °F to +160 °F	

Physical characteristics	Metric	Imperial
Typical weight	1.41 kg	3.1 lbs
Weight of Li metal content	34.0 g	1.2 oz
Width	62.2 mm	2.45 in
Height	111.8 mm	4.40 in
Depth	127.0 mm	5.00 in
Battery case	Plastic	

References	
Mating connector	IT Cannon CA 110821-6
Reference specification	
Nato Stock Number	6135-01-501-0833

*\*This battery does not require an export license under ITAR rules when shipped to more than 30 countries. Please consult .*

# BA 5390/U



# Primary lithium battery system

## BA 5372

### 6 V Primary lithium manganese dioxide (Li-MnO<sub>2</sub>) battery

The battery consists of 2 LM 17130 cells connected in series, arranged in a cylindrical construction with nickel plated button terminals at either end.

#### Key Features

- No passivation delay effect
- Low self-discharge rate
- Long shelf life
- Nickel plated button terminals
- Mylar sleeve
- Non-restricted to Class 9

#### Typical applications

- Memory hold
- AN/GRC-210
- AN/PRC-119
- AN/PSQ-4
- PATRIOT
- Others

#### Electrical characteristics

Nominal OCV	6.5 V
Operating voltage	5.6 V
Cut-off voltage	4 V
Maximum constant current	300 mA
Maximum pulse current	400 mA
Typical capacity at 4.5 mA to 4V cut-off	
at 70°F(21°C)	560 mAh
at -4°F(-20°C)	450 mAh
Operating temperature	-29°C to +71°C / -20°F to +160°F
Storage temperature	
Recommended maximum	+35°C / +95°F
Possible	-40°C to + 71°C / -40°F to +160°F

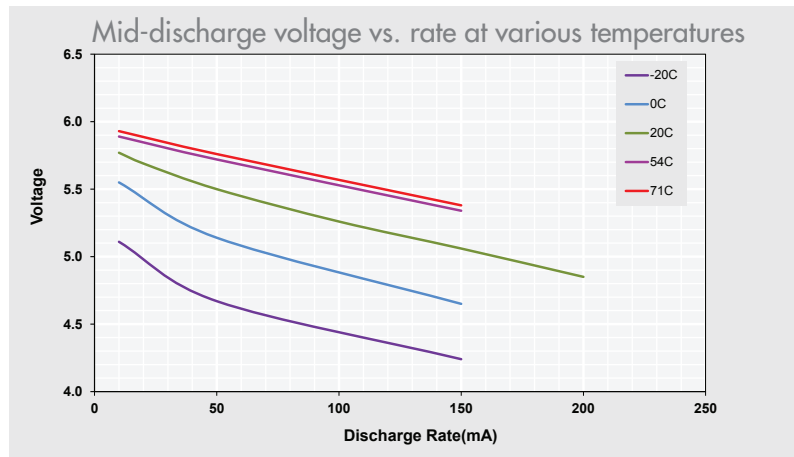
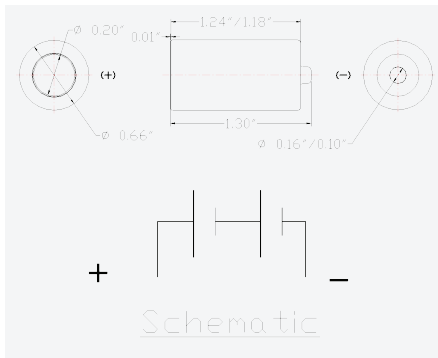
#### Physical characteristics

	Metric   Imperial
Maximum weight	20 g   0.7 oz
Weight of Li metal content	0.4 g   —
Diameter (max) body	16.8mm   0.66 in
Length (max)	33 mm   1.3 in

#### References

Reference specification	NATO Stock
Number	6135-01-214-6441

# BA 5372

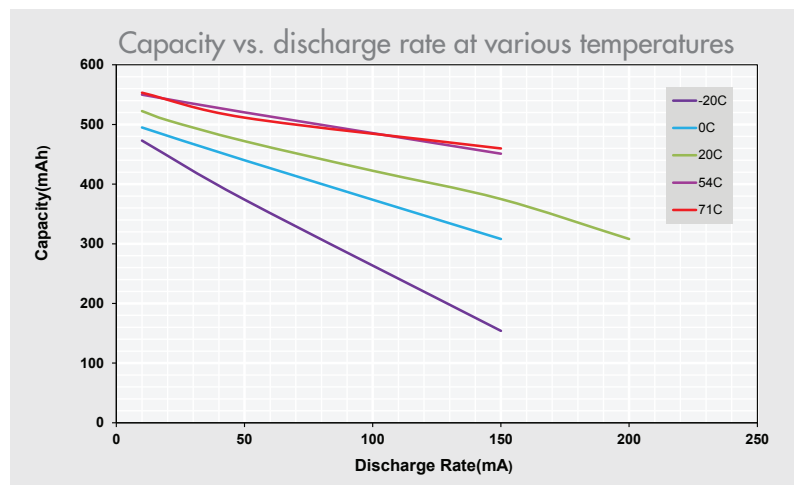
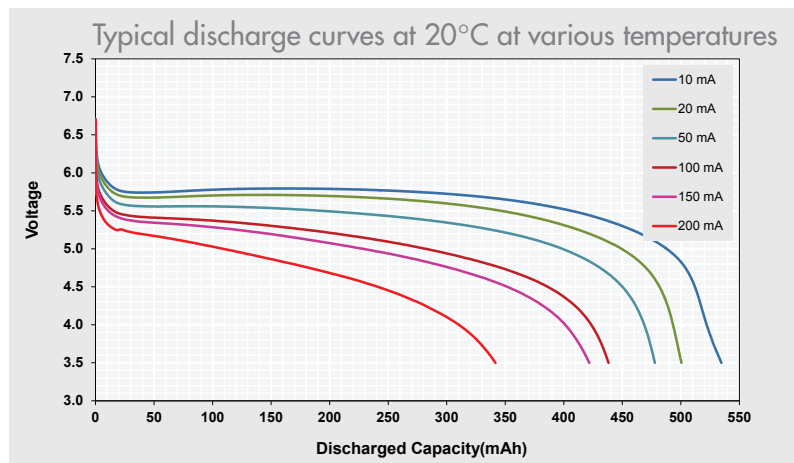


## Storage

- Store in dry area not  $>30^{\circ}\text{C}$

## Handling

- Do not disassemble
- Do not short circuit
- Do not charge
- Do not incinerate



# Primary lithium battery

## BA 5367

3 V Primary lithium manganese dioxide (Li-MnO<sub>2</sub>)  
High drain capability  
1/3 C-size spiral cell

### Benefits

- High and stable discharge voltage
- High pulse capability
- Performance not affected by cell orientation
- Long storage possible before use
- Ability to withstand extreme temperature

### Key Features

- Low self-discharge rate (*less than 3% after one year of storage at + 20°C*)
- Hermetic glass-to-metal sealing
- Flat pressure contact terminals
- Built-in safety vent (*at the negative end of the cell*)
- Meets shock, vibration, and other environmental requirements of military specifications
- Made in the USA

### Typical applications

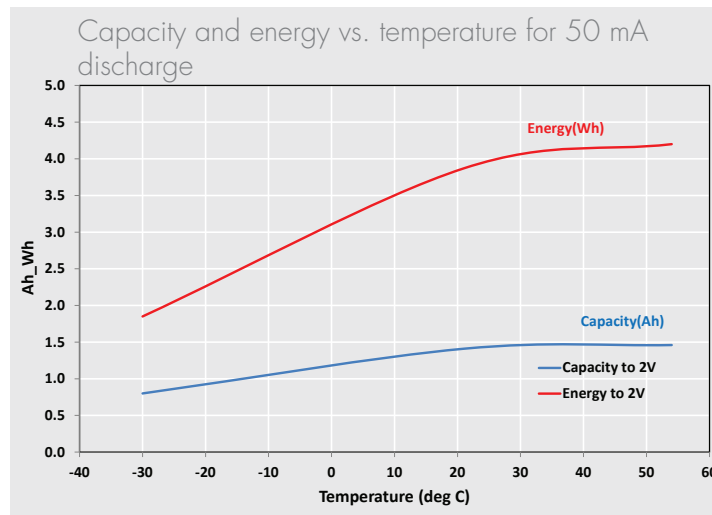
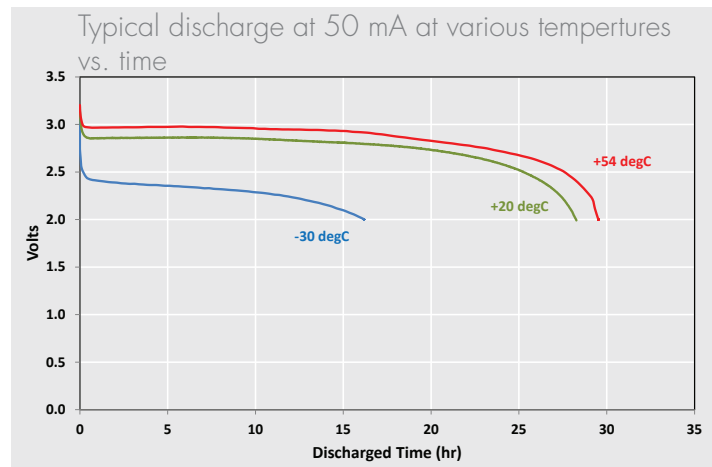
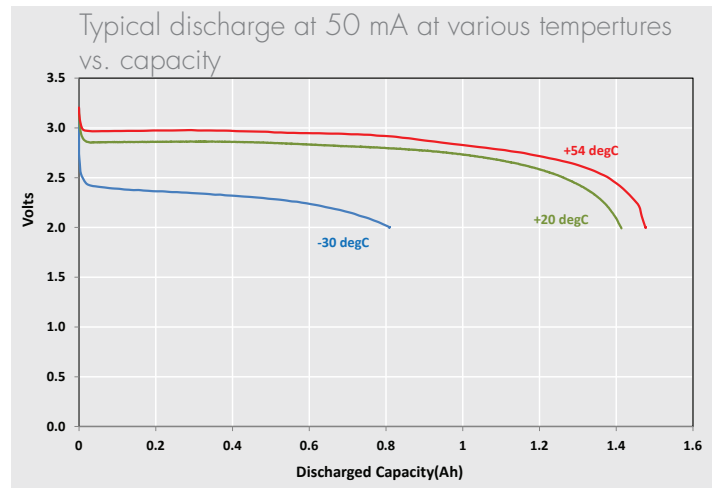
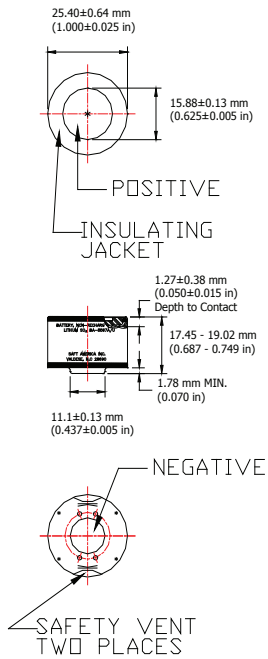
- Night vision

Cell size reference	1/3 um2	1/3 R14	1/3 C
<b>Electrical characteristics</b>			
Nominal capacity			1.4 Ah
Open circuit voltage			3 V
Nominal voltage (at 50 mA)			2.8 V
Rated capacity (at 50 mA discharge)			
70°F (21°C)			1.4 Ah
- 20°F (- 29°C)			0.8 Ah
Maximum recommended continuous current			0.5 A
Storage (% of rated capacity)			
1 year		70°F (21°C):	>95%
1 month		160°F (71°C):	>90%
Operating temperature range		- 40°F (- 40°C) to 160°F (71°C)	
<b>Physical characteristics</b>			
Diameter (maximum)		26.04 mm (1.025 in)	
Height		19.02 mm (0.749 in)	
Weight (maximum)		1.1 oz (31.2 gr)	
Weight of Li		0.4 gr	
Volume		0.54 in <sup>3</sup> (8.9 cc)	
<b>References</b>			
NSN Number		6135-01-507-1135	

# BA 5367

## Handling precautions

- Do not puncture, open, or mutilate
- Do not obstruct safety vent mechanism
- Do not short circuit or charge
- Do not expose to fire or temperatures above 160°F (71°C)



Архангельск (8182)63-90-72  
Астана (7172)727-132  
Астрахань (8512)99-46-04  
Барнаул (3852)73-04-60  
Белгород (4722)40-23-64  
Брянск (4832)59-03-52  
Владивосток (423)249-28-31  
Волгоград (844)278-03-48  
Вологда (8172)26-41-59  
Воронеж (473)204-51-73  
Екатеринбург (343)384-55-89  
Иваново (4932)77-34-06

Ижевск (3412)26-03-58  
Иркутск (395)279-98-46  
Казань (843)206-01-48  
Калининград (4012)72-03-81  
Калуга (4842)92-23-67  
Кемерово (3842)65-04-62  
Киров (8332)68-02-04  
Краснодар (861)203-40-90  
Красноярск (391)204-63-61  
Курск (4712)77-13-04  
Липецк (4742)52-20-81

Киргизия (996)312-96-26-47

Магнитогорск (3519)55-03-13  
Москва (495)268-04-70  
Мурманск (8152)59-64-93  
Набережные Челны (8552)20-53-41  
Нижний Новгород (831)429-08-12  
Новокузнецк (3843)20-46-81  
Новосибирск (383)227-86-73  
Омск (3812)21-46-40  
Орел (4862)44-53-42  
Оренбург (3532)37-68-04  
Пенза (8412)22-31-16

Россия (495)268-04-70

Пермь (342)205-81-47  
Ростов-на-Дону (863)308-18-15  
Рязань (4912)46-61-64  
Самара (846)206-03-16  
Санкт-Петербург (812)309-46-40  
Саратов (845)249-38-78  
Севастополь (8692)22-31-93  
Симферополь (3652)67-13-56  
Смоленск (4812)29-41-54  
Сочи (862)225-72-31  
Ставрополь (8652)20-65-13

Казахстан (772)734-952-31

Сургут (3462)77-98-35  
Тверь (4822)63-31-35  
Томск (3822)98-41-53  
Тула (4872)74-02-29  
Тюмень (3452)66-21-18  
Ульяновск (8422)24-23-59  
Уфа (347)229-48-12  
Хабаровск (4212)92-98-04  
Челябинск (351)202-03-61  
Череповец (8202)49-02-64  
Ярославль (4852)69-52-93

[www.sft.nt-rt.ru](http://www.sft.nt-rt.ru) | | [sfq@nt-rt.ru](mailto:sfq@nt-rt.ru)